

DATE: July 2, 2024

TO: Emily Brickman, P.G., *Senior Project Manager – Geologist, EnSafe*

FROM: Caleb Gourley, *Project Manager, Harbor*

RE: Bi-weekly Site Inspection
NABORS Landfill
Mountain Home, AR
Harbor Project No: ENSF-23299

Harbor visited the NABORS landfill in Mountain Home, Arkansas on June 27, 2024, to conduct the bi-weekly site visit to assess the condition of the leachate collection system. Comfort Systems USA (CSU), the contractor conducting repairs to the leachate collection system, had been on-site the week of June 17, 2024, to make repairs to the system. Findings and observations from the landfill inspection are summarized below:

- Vertical leachate collection sump (VLCS)-1 appeared to be functioning correctly. The sump was not overflowing but the level of leachate in the sump was at approximately 75% capacity.
- VLCS-2 appeared to be functioning correctly.
- The display at leachate collection sump (LCS)-1 display is now operational and the green strobe was activated. However, the sump would not activate in "hand" or "auto" mode and the green strobe would not turn off when the sump was placed into the "off" position. The display indicated that the sump has a pump fault.
- The panel display remains off at LCS-2.
- LCS-3 appeared to be functioning in "hand" mode only, as the pump hours remained at 60 (as documented by Harbor in June 2023). As the hours haven't changed, the station is likely not starting automatically and is malfunctioning.
- LCS-4, LCS-7, LCS-8, and LCS-9 had pump faults and were not functioning.
- LCS-5 and LCS-6 appear to be functioning correctly.
- The closure turf is damaged around several vent pipes near LCS-4. A turbine vent near LCS-8 has also detached (see photographs 1-2).
- Minimal stormwater was observed in the leachate tank battery containment. As such, no stormwater was released (see photograph 3).
- A turbine vent remains detached near LCS-8 (see photograph 4).

Attachment A is a map showing the LCS points. Upon completion of the LCS repairs, leachate hauling to the City of Springfield, Missouri wastewater treatment plant will resume.

Photographs are included in Attachment B. Copies of the field notes and the LCS status form are included in Attachment C.

Attachments:

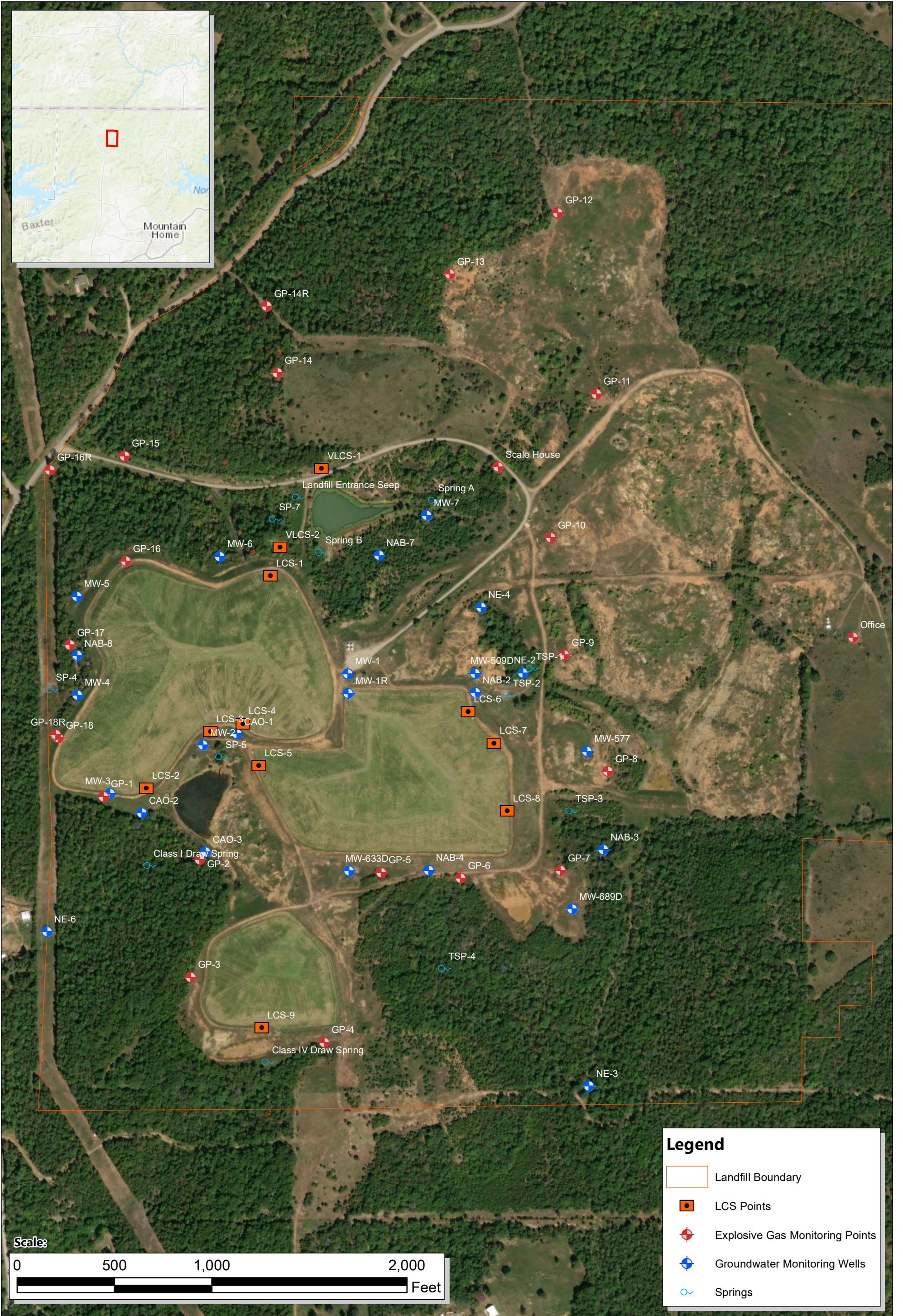
Attachment A – Site Map

Attachment B – Site Photographs

Attachment C – Field Notes and Leachate Collection System Status Form

Attachment A

Site Map



Legend

Landfill Boundary

LCS Points

Explosive Gas Monitoring Points

Groundwater Monitoring Wells

Springs



Attachment B

Site Photographs



Photograph 1: Damaged closure turf around vent pipe near LCS-4.



Photograph 2: Damaged closure turf around vent pipe near LCS-4.



Photograph 3: View North of minimal stormwater within tank battery containment.




Photograph 4: View of damaged turbine vent near LCS-8.

Attachment C

**Field Notes and Leachate Collection System
Status Inspection Form**

| Nabors Landfill | | 6/27/24 |
|------------------------------------|---------------------------------|---------|
| Bi-weekly Leachate Management | | |
| weather: 80's, sunny, light breeze | | |
| 1032: | C. Gouby on-site | |
| 1037: | Arrive at VLCS-2 | |
| 1040: | Arrive at VLCS-1 | |
| 1043: | Arrive at leachate tank battery | |
| | - tank level @ 144.2" | |
| | - minimal stormwater in cont. | |
| | none released | |
| 1048: | Arrive at LCS-1 | |
| 1053: | Arrive at LCS-2 | |
| | - station not operational | |
| 1055: | Arrive at LCS-3 | |
| | - station works in "hand" only | |
| 1057: | Arrive at LCS-4 | |
| 1101: | Arrive at LCS-5 | |
| 1105: | Arrive at LCS-9 | |
| 1110: | Arrive at LCS-8 | |
| 1112: | Arrive at LCS-7 | |
| 1114: | Arrive at LCS-6 | |
| 1130: | C. Gouby off-site. | |





Leachate Collection System Status

Date: 6/27/20 Arrival Time: 1032 Location: NABORS Landfill Leachate Tank Battery Level (inches): 144.2"

Weather Conditions: 80's, sunny, light breeze

| Panel Number | Display Functioning (Yes/No) | Leachate Level (inches) | Green Flashing? (Yes/No) | Amber Flashing? (Yes/No) | Red Flashing? (Yes/No) | Working in Hand? (Yes/No) | Working in Auto? (Yes/No) | VFD Status | Hours | Alarm | Comments | |
|-------------------|------------------------------|-------------------------|--------------------------|--------------------------|------------------------|---------------------------|---------------------------|------------|-------|-------|-------------------------|----------|
| VLCS-1 | N/A | N/A | N/A | N/A | ✓ | ? | ? | N/A | N/A | N/A | Sump status: | 3/4 full |
| VLCS-2 | N/A | N/A | N/A | N/A | ✓ | ✓ | ✓ | N/A | N/A | N/A | Sump status: | 1/2 full |
| LCS-1 | ✓ | 0.0 | ✓ | ✓ | ✓ | ✓ | ✓ | - | 147 | ✓ | Pump Fault | |
| LCS-2 | - | - | - | - | - | - | - | - | - | - | Station not operational | |
| LCS-3 | ✓ | 22.4 | ✓ | ✓ | ✓ | ✓ | ✓ | - | 60 | ✓ | "Hand only" | |
| LCS-4 | ✓ | 0.0 | ✓ | ✓ | ✓ | ✓ | ✓ | - | 210 | ✓ | Pump Fault | |
| LCS-5 | ✓ | 9.7 | ✓ | ✓ | ✓ | ✓ | ✓ | ✓ | 0 | ✓ | Station OK | |
| LCS-6 | ✓ | 9.4 | ✓ | ✓ | ✓ | ✓ | ✓ | ✓ | 26 | ✓ | " " | |
| LCS-7 | ✓ | 0.0 | ✓ | ✓ | ✓ | ✓ | ✓ | - | 29 | ✓ | Pump Fault | |
| LCS-8 | ✓ | 9.7 | ✓ | ✓ | ✓ | ✓ | ✓ | - | 1376 | ✓ | " " | |
| LCS-9 | ✓ | 0.0 | ✓ | ✓ | ✓ | ✓ | ✓ | - | 2191 | ✓ | " " | |
| General Comments: | | | | | | | | | | | | |